

Vacuum Oven

TVO-2

PART ID: CTV223

CASCADE™

TEK

Capacity	1.67 cu.ft. (47.2 liters)
Interior Dimensions (W x D x H)	12" x 20" x 12" 304 x 508 x 304 mm
Exterior Dimensions (W x D x H)	20.2" x 30.8" x 27.1" 513 x 887 x 689 mm
Unit Weight	179 lb (81.2 kg)
Shipping Weight	218 lb (99 kg)
Shelves	3 standard, 3 total
Maximum Weight Per Shelf	35 lb / 15.8 kg
Permitted Total Load	105 lb / 47.6 kg
Standard Door Gasket	Silicone Standard
Access Port	1" vacuum port (KF-25)
Controls	WATLOW PM9 Plus
Warranty	2 Year Limited Warranty
Interior Construction	300 series stainless steel
Exterior Construction	Painted Cold Roll Steel
Wall Clearance, Each Side	6.0" (152 mm)
Wall Clearance, Rear	12.0" (305 mm)
Vertical Clearance	12.0" (305 mm)
Electrical, 50/60Hz, AC, 1Ø	
Voltage	110V-120V
Full Load Amps	10
Nominal Power (watts @150°C)	662
Plug Supplied	NEMA 5-15P
Energy Consumption (kWh/day)	
At 80°C	12.8
At 150°C	15.4
At 220°C	24.4
Temperature Range 10°C above ambient to 220°C	
Heat-Up Time— Minutes to 80°C	70
Heat-Up Time — Minutes to 150°C	120
Heat-Up Time — Minutes to 220°C	175
Temperature Uniformity	+/- 6% of Set Point
Temperature Stability	+/- 0.2°C @ 150°C
Operational Vacuum Range	-3.0 to -29.9 InHg
Vacuum Display Range	0-29.9 InHg
Safety Certifications	UL 61010-1, EN 61010-1, CSA 61010-1, CE



MADE IN
USA

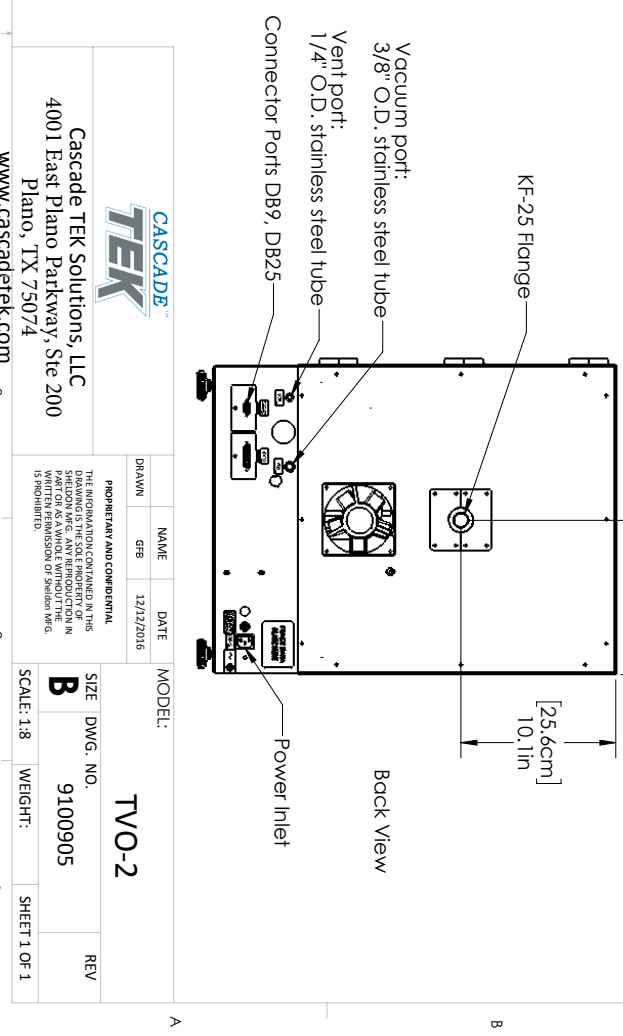
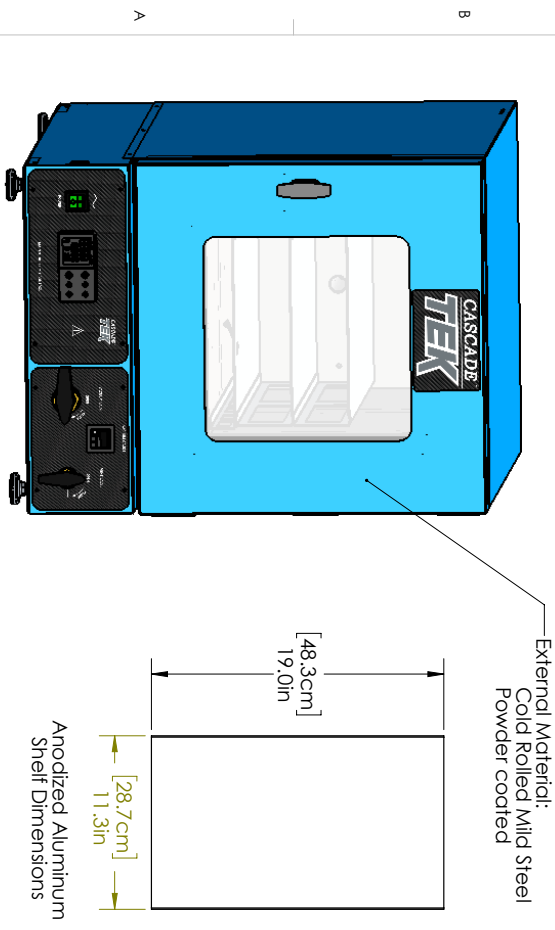
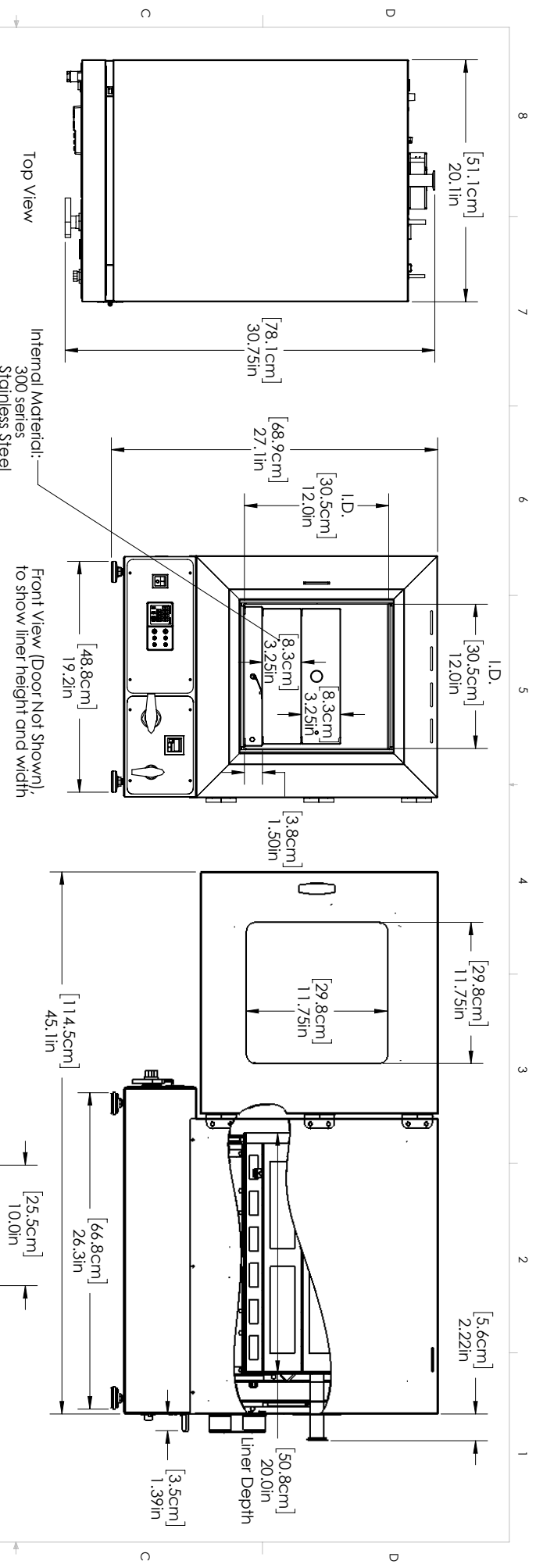


We reserve the right to alter specifications at any time

0740582 6/24

Contact Cascade TEK

sales@cascadetek.com • cascadetek.com • +1-971-371-4096



		CASCADE TEK Solutions, LLC 4001 East Plano Parkway, Ste 200 Plano, TX 75074 www.cascadetek.com	
DRAWN	NAME	DATE	MODEL:
GRB	GRB	12/12/2016	TVO-2
<small>THE INFORMATION CONTAINED IN THIS SHEET IS UNCLASSIFIED EXCEPT WHERE SHOWN OTHERWISE. ANY REPRODUCTION IN WHOLE OR IN PART WITHOUT THE WRITTEN PERMISSION OF Cascade, Inc. IS PROHIBITED.</small>			
SCALE: 1:8	WEIGHT:	SIZE	DWG. NO.
		B	9100905
SHEET 1 OF 1		REV	